

# Lincoln Stamp Club

## SOUVENIR SHEET DECEMBER 2013

Monthly News of the  
Lincoln Stamp Club

## 2013 OFFICERS

President:

*Helen Marks ('13)*

Vice President:

*Ken Pruess ('13)*

Secretary:

*David Frye ('13)*

Treasurer:

*Ron Ecklund ('13)*

Board Member:

*Joel Johnson ('14)*

Board Member:

*Carl Marks ('13)*

## MEETINGS

The Club meets the  
first and third Thurs-  
days, 7:00–8:30 p.m.

## LOCATION

St. Paul United  
Methodist Church  
1144 M St.  
Lincoln, Neb.

## CONTACT

E-mail:

questions@lincoln-  
stampclub.org

Web:

www.lincolnstamp-  
club.org

Mail:

PO Box 57434  
Lincoln, NE  
68505-7434

## AFFILIATION

The Club is an affili-  
ate of the American  
Philatelic Society:  
APS #0799-064882.

## Monthly and Quarterly Benefits to Memberships in Philatelic Organizations

### Magazines and Journals Offer In-depth Guides to Their Fields

by *David M. Frye*

One of the annual rituals that has come to mark the passing of the seasons is taking stock of memberships in philatelic organizations. As my collecting and research interests have changed, I've found that different groups offer guided forays into fields I'd not previously explored.

The organizations that match up with my stamp-collecting habits have changed a bit over the years—some are newer and one or two I've tried for a time and then moved on. While different groups offer their own distinctive set of member benefits, most share the common benefit of publishing a magazine or journal. This provides one piece of common ground for comparing those benefits.

In no particular order, other than alphabet-ic, here are some brief, thumbnail sketches of the philatelic organizations I currently include in my philatelic e-mail footer.

#### American Philatelic Society

The mothership of philatelic organizations in the U.S., APS offers a diverse menu of benefits to members. Its monthly magazine, *The American Philatelist*, delivers a monthly package of articles covering the world of stamp collecting in its many forms.



#### Linn's Stamp News

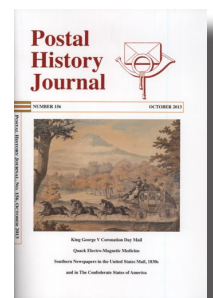


Well, *Linn's Stamp News* is not technically a membership organization, but the hobby's most popular general-interest news publication. About two years ago, I decided to subscribe

to the digital version and to forego the weekly printed version. The monthly magazine still comes in the mail, however. This is a dependable source of current information on U.S. postal issues.

#### Postal History Society

Published in February, June, and October each year, this journal presents research articles, literature surveys, and book reviews. The articles typically include numerous full-color illustrations and compendious documentation. The journal's focus is broad and deep, covering the world and its centuries of postal history.



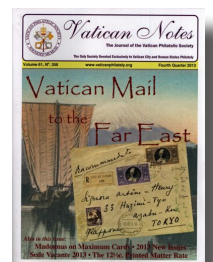
#### United States Stamp Society



This monthly journal covers society news, a plate number report on U.S. issues, and both long- and short-form research articles on the big-picture and fine-grain aspects of the philatelic production of the Post Office Department and its successor, the Postal Service.

#### Vatican Philatelic Society

This large-format (8.5"x11") full-color publication provides updates on new issues, guides to collecting Vatican philatelic items, and profusely illustrated articles that provide ecclesiastical context. The writers' backgrounds span the globe.



## USPS Update

Revenue Grows, Operations Prove Productive, yet Losses Continue to Mount

WASHINGTON — The U.S. Postal Service ended the 2013 fiscal year (Oct. 1, 2012–Sept. 30, 2013) with a net loss of \$5 billion. This marks the seventh consecutive year in which the Postal Service incurred a net loss, highlighting the need to continue to capitalize on growth opportunities, reduce costs, and enact comprehensive legislation to provide a long-term solution to the agency’s financial challenges.

Even though the Postal Service has implemented a number of strategies that resulted in \$15 billion in annual expense reductions since the Postal Accountability and Enhancement Act was passed in 2006, the combination of onerous mandates in existing law and continued First-Class Mail volume declines threatens the Postal Service’s financial viability.

**Read More:** [http://about.usps.com/news/national-releases/2013/pr13\\_087.htm](http://about.usps.com/news/national-releases/2013/pr13_087.htm).

## December Exchange

The Club offers the following items at its monthly exchange. Make payments in cash or in personal checks made out to the Club. Items with a catalogue value are donations to the Lincoln Stamp Club; proceeds from the sale of donations benefit the Club’s general work. **Bold notes** indicate special opening prices on donated items.

Lot #	Description	Catalogue	Final	Buyer
• 01	Scott Catalogue 2004: Vols. 1–6	—	_____	_____
• 02	Showgard Mounts: Large sizes	—	_____	_____
• 03	Showgard Mounts: Extra-large sizes	—	_____	_____
• 04	Scott Catalogue 2001: Vol. 6 (So–Z)	—	_____	_____
• 05	<i>Harris Stamp Collector’s Guide &amp; Companion</i>	—	_____	_____
• 06	<i>Postal Service Guide to U.S. Stamps</i> (20th ed.)	—	_____	_____
• 07	<i>Stamp Collecting for Fun and Profit</i> , Frank Cetin	—	_____	_____
• 08	<i>Stamp Collector’s Handbook</i> , Samuel Grossman	—	_____	_____
• 09	<i>Scott 1988 U.S. First Day Cover Catalogue</i>	—	_____	_____
• 10	<i>Standard Handbook of Stamp Collecting</i> , R. Cabeen	—	_____	_____
• 11	<i>Color Treasury of Stamp Collecting</i>	—	_____	_____
• 12	U.S. Replica Stickers (Sc. 740–749, 1084)	—	_____	_____
• 13	U.S. Sc. 2286–2335, sheet (50), book, mount; face \$11.00, list \$16.95, <b>open at \$11.00</b>	\$50.00	_____	_____
• 14	U.S. Sc. 2381–2385, 5 Maximum Cards FDC	\$6.25	_____	_____
• 15	U.S. Sc. 2697g, Artcraft FDC on page	\$2.00	_____	_____
• 16	U.S. Sc. 3182–3191, Celebrate the Century Album, 10 sheets of 15; face \$48.90, \$128 catalogue, <b>open at \$48.90</b>	\$128.00	_____	_____
• 17	U.S. Sc. 3933, FDC w/ Color Digital Cancel. (CDC)	\$2.00	_____	_____
• 18	U.S. Sc. 4087, FDC w/ CDC, some roller marks	\$2.00	_____	_____
• 19	U.S. Sc. 4361, FDC w/ CDC	\$2.10	_____	_____
• 20	U.S. Sc. 4414d, FDC w/ CDC	\$2.10	_____	_____
• 20	Germany Sc. 1420a–1420c, M, souv. sheet, wavy	\$3.50	_____	_____
• 21	Germany Sc. 1453, M	\$1.75	_____	_____
• 22	Germany Sc. 1454, M	\$1.25	_____	_____
• 23	Germany Sc. 1455, M	\$1.25	_____	_____
• 24	Germany Sc. 1456, M	\$1.75	_____	_____
• 25	Germany Sc. 1457–1458, M	\$2.50	_____	_____
• 26	Germany Sc. 1459, M	\$1.25	_____	_____
• 27	Germany Sc. 1460, M	\$2.10	_____	_____
• 28	Germany Sc. 1461, M	\$1.40	_____	_____
• 29	Germany Sc. 1462, M	\$1.40	_____	_____
• 30	Germany Sc. 1463, M	\$1.75	_____	_____
• 31	Germany Sc. 1464, M	\$1.75	_____	_____
• 32	Germany Sc. 1465, M	\$1.60	_____	_____
• 33	Germany Sc. 1466, M, creasing on top of sheet	\$3.75	_____	_____
• 34	Germany Sc. 1467, M	\$1.90	_____	_____
• 35	Germany Sc. 1468, M	\$1.90	_____	_____
• 36	Germany Sc. 1469, M	\$2.50	_____	_____
• 37	Germany Sc. 1470, M	\$1.75	_____	_____
• 38	Germany Sc. 1471, M	\$1.40	_____	_____
• 39	Germany Sc. 1472, M	\$1.60	_____	_____
• 40	Germany Sc. 1473, M	\$1.60	_____	_____
• 41	Germany Sc. 1474, M	\$1.00	_____	_____
• 42	Germany Sc. 1495, M	\$1.00	_____	_____



## Membership for 2014

It's Time to Remit Your Dues to Renew Membership in the Lincoln Stamp Club

Membership in the Lincoln Stamp Club runs each year from January to December, so now is the time to renew your annual membership.

When you check the mailing label on your copy of the newsletter, the two-digit code following your last name gives the year that your membership expires. So, for instance, if you find a "13" there, then your membership runs through the end of December.

To renew, send

\$12—plus \$1 for each additional family member—to:  
Lincoln Stamp Club  
PO Box 57434  
Lincoln, NE  
68505-7434.

You may also bring your dues to any Club meeting. Dues are payable in cash or by check made out to the Club:

Lincoln Stamp Club.

Additional details about the benefits of membership are posted on the Web. **Membership:** [www.lincolnstampclub.org/membership/](http://www.lincolnstampclub.org/membership/).

## LINPEX 2014 Exhibits

Exhibition at February's Stamp Show is Seeking Members' Intriguing Philatelic Items for Display

One of the key attractions of LINPEX 2014 will be the competitive exhibition of eighty frames of philatelic story-telling by exhibitors from nearby and around the country.

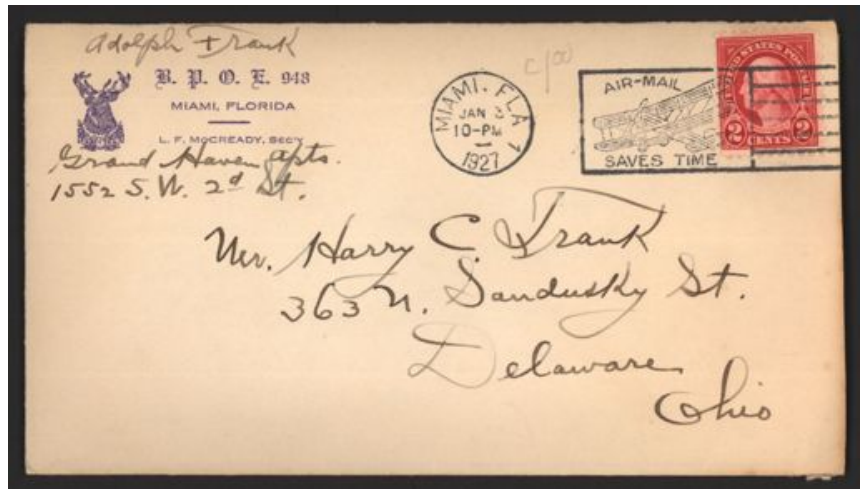
Each exhibit will receive careful attention from the panel of three judges. Two are accredited and one is an up-and-coming exhibitor who will use the experience gained at LINPEX to guide further work toward becoming an accredited judge.

Exhibiting offers the opportunity to take your material, tell a compelling story about it, educate the public, and learn—as one always does—by becoming deeply familiar with the details of your holdings.

The basic entry fee for each exhibit is \$15; the fee for each frame is \$8. Details are available on the Web or by talking with David Frye, Exhibits Coordinator.

**Exhibiting:** [www.lincolnstampclub.org/linpex/](http://www.lincolnstampclub.org/linpex/).

## From the "Vault"—Members' Show and Tell



**Miami to Delaware, Ohio:** A rather ordinary cover contains a letter that reveals details of how people interacted with the U.S. mail in 1927:

Dear Harry—

Your letter of 30th & 31st received today. I mailed my special delivery letter before I received yours. I left my room before the mail came. Also received postal card & Ike Haecker adv. & Maimi B.&L. card.

**If you have an intriguing cover to share, send a high-resolution image and details to [questions@lincolnstampclub.org](mailto:questions@lincolnstampclub.org).**

## Wanted: Exchange Manager

Opportunity Open for Club Member to Coordinate Monthly Exchange

When each month's business meeting adjourns, Club members gather around several long tables to view and then to make offers on items in the Club's Exchange. The list on p. 2 of this issue of the *Souvenir Sheet* outlines the items in the Exchange for December.

Beginning in January, the position of Exchange Manager is open. The responsibilities for this appointed position include:

- gathering, organizing, and preparing donated items for the Exchange;
- receiving lists of members' items and incorporating them into the Exchange list;
- preparing the Exchange list; and
- e-mailing the Exchange list to the newsletter editor.

One of the fringe benefits of serving as the Exchange Manager is getting the chance to learn the ins and outs of the listings in the Scott catalogues. Donated

items are attached to sheets that identify their catalogue numbers and provide brief descriptions of their conditions. Compiling this information leads one into places in the catalogues that may be unfamiliar. This is painless way to become more familiar with the vast array is material in the philatelic world.

If you have questions about the responsibilities of the position, please contact the outgoing Exchange Manager:

David Frye

402.797.7207

[questions@lincolnstampclub.org](mailto:questions@lincolnstampclub.org)

The donated items list that will appear in the January newsletter have already been identified, organized, and listed. If you would decide to step up and volunteer, the work would be due for the February newsletter. This would give you some time to ease into the routine.

## Meetings: Business Meeting & Collecting Christmas

The Club meets at a central location:  
St. Paul United Methodist Church  
1144 M St., Lincoln, Neb.

Go south on 11th Street, then turn left into the church's parking garage between N and M Streets. Take the elevator to the *main* floor. Street parking is available too.

- **Business Meeting with Elections and Exchange:** Thursday, December 5, 2013, 7–8:30 p.m.
- **Program:** *Collecting Christmas*, Helen Marks, Thursday, December

19, 2013, 7–8:30 p.m.

- **Business Meeting with New Officers and Exchange:** Thursday, January 2, 2014, 7–8:30 p.m.
- **Program:** *Evaluating Stamp Condition*, Ken Pruess, Thurs., January 16, 2014, 7–8:30 p.m.
- **Coming Up Later in 2014:** Feb. 6 and 20; March 6 and 20; April 3 and 17; May 1 and 15; June 5 and 19; July 3 and 17.
- **Programs:** If you want to present a program, talk to our VP.

## WANTED

### Items for Monthly Exchanges

If you would like to include items in the monthly exchanges, send your descriptions and prices to [questions@lincolnstampclub.org](mailto:questions@lincolnstampclub.org) by **Dec. 20 for the Exchange on Jan. 2, 2014.**

Send info about more significant items, which might require members to research ahead of time, by **Dec. 20 for the Feb. 6, 2014, Exchange.** Forms for your items are available online:

- [www.lincolnstampclub.org/downloads/SmallExchangeSheets.pdf](http://www.lincolnstampclub.org/downloads/SmallExchangeSheets.pdf)
- [www.lincolnstampclub.org/downloads/ExchangeSheet.pdf](http://www.lincolnstampclub.org/downloads/ExchangeSheet.pdf)

## USPS Releases New Postal Issues: Jan. & Feb. '14

### January Issues:

*Year of the Horse:* 1 forever; pane (12); TBA.

*Love—Cut Paper Heart:* 1 special forever; pane (20); TBA.

*Olympics:* TBA.

*Winter Flowers:* 4 forever; double-sided pane (20); TBA.

*Floral Weddings:* 1 forever and 1 two-ounce forever; TBA.

*Star Spangled Banner:* 1 def.; double-sided pane (20); coil (100); ATM booklet

(18); TBA.

*Stars and Stripes:* 4 first-class w/ denom.; coil (3k & 10k); TBA.

*Ferns:* 4 first-class w/ denom.; coil (3k & 10k); TBA.

*C. Alfred "Chief" Anderson:* 1 2-oz.; pane (20); TBA.

### February Issues:

*Abraham Lincoln, Hummingbird, Great-Spangled Fritillary, Ralph Ellison, Shirley Chisholm, Wilt Chamberlain, and The Beatles.*

## LOCAL SHOWS

### LINPEX '14

The Lincoln Stamp Club will celebrate its fiftieth anniversary during a show set for **Feb. 22–23, 2014.** The show will feature an expanded bourse, exhibits, and an anniversary observance. Exhibit info at [www.lincolnstampclub.org/linpex](http://www.lincolnstampclub.org/linpex).

The Club has received mention on the USPS's calendar of events:

[www.uspsstamps.com/event/2014/february/22](http://www.uspsstamps.com/event/2014/february/22).

Please Send Your 2014 Dues  
of \$12 to the Club by 12/31.  
See Details on p. 3.

LINCOLN STAMP CLUB  
PO BOX 57434  
LINCOLN NE 68505-7434  
1964 • Fifty Years • 2014