

Lincoln Stamp Club

SOUVENIR SHEET
DECEMBER 2014
Monthly News of the
Lincoln Stamp Club

2014 OFFICERS

President:
Cynthia Carlson ('14)
Vice President:
Ken Pruess ('14)
Secretary-Treasurer:
Ron Ecklund ('14)
Board Member:
Joel Johnson ('14)
Board Member:
Helen Marks ('14)

MEETINGS

The Club meets the first and third Thursdays, 7:00–8:30 p.m.

LOCATION

St. Paul U.M. Church
1144 M St.
Lincoln, Neb.

CONTACT

E-mail:
questions@lincolnstampclub.org
Web:
www.lincolnstampclub.org
Mail:
PO Box 57434
Lincoln, NE
68505-7434.

AFFILIATION

The Club is an affiliate of the American Philatelic Society:
APS #0799-064882.

ANNIVERSARY

1964—2014
Fifty Years

NEWSLETTER

Editor: *David M. Frye*

Finding Postal Attractions in Out-of-the-Way Places: Part II

Making a Late-Afternoon Visit to the City Post Office in Arusha, Tanzania

by *David M. Frye, Editor*

In October, I had the opportunity to go on a mission trip to northern Tanzania. During the planning stages, my church's mission director asked tripgoers if they had anything particular they wanted to see or do on the trip. I asked to make a visit to a post office.

The pastor of our partner church, the Rev. Mmanga Robson, made arrangements for me to visit the post office in Arusha at the beginning of our second week in Tanzania. During the week before the visit, I wrote letters and postcards. The letters went into envelopes I'd addressed at home ahead of time.

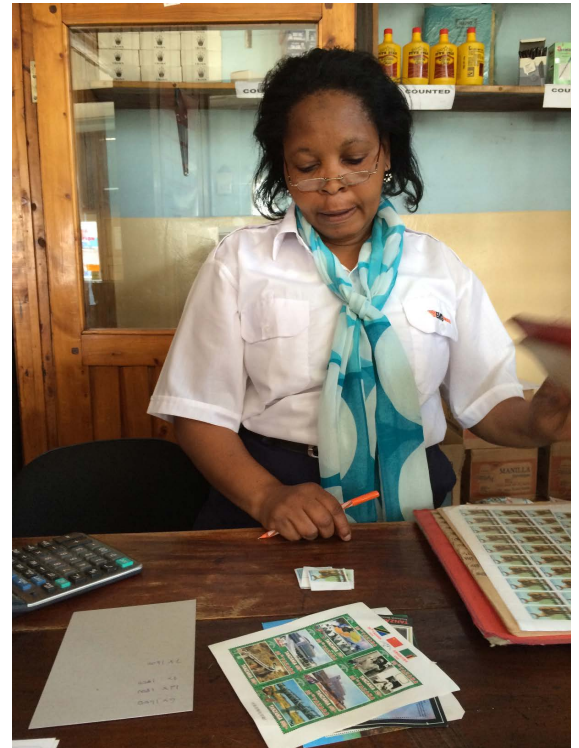
We stopped in Arusha on the afternoon of Monday, October 20, and Pastor Mmanga and I walked from a crafts market to the post office, where he would serve as my interpreter.

The lobby had one postal window on the right; a Western Union office occupied a larger portion of the space. Pastor Mmanga explained to the clerk that I had letters and postcards to mail and that I wanted to buy one each of every issue she had in stock.

She kept a ledger on a piece of card stock as she pulled stamps from the Wild Animals series of 2010 for my mailings. She mixed stamps to meet the rate for postcards—TSh 1,600—and for letters—TSh 1,800. Tanzania's currency is reckoned in Tanzanian shillings, a remnant of the country's time as a British colony following World War I and ending with the independence of Tanganyika on December 9, 1961. The denominations are rendered on the stamps like this: 600/-, 800/-, and 1000/-, where the number before the virgule represents shillings (*shillingi*) and the hyphen would represent cents (*sent*).

I was struck by how the cost of sending a postcard, converted to U.S. dollars, was \$0.93,

see **Tanzania** on p. 2



Post Office, Arusha, Tanzania: Despite the small size of this particular post office, the city is rather large, with a population in excess of 400,000. It is the regional capital of the area bearing the same name. The East African Community (Burundi, Kenya, Rwanda, Tanzania, and Uganda) uses Arusha as the organization's center. **Above:** The postal clerk on duty on October 20 prepares my stamp order.

Upper Right: The exterior of the post office building, which sits on a busy corner.

Lower Right: A shopkeeper supplies a mail box for the store's customers to post their letters.



January 2015 Program: What's on Your Shelf?

Many stamp collectors may have started out with a basic album for their U.S. or worldwide collections. As the years go by, the single album's collection may grow to fill many albums and other storage containers.

Along with such growth, have you seen your collection of books, pamphlets, journals, magazines, clippings, and other reference materials take up more space as well?

The January program, scheduled for January 15, will give us all the chance to find out about what our fellow Club members have discovered—over the years—to be the most helpful go-to sources of information about their special niches.

Please plan to bring samples of your most helpful references to the January 15 meeting. These could be the catalogues for your favorite countries, or the journals from those particular societies dedicated to your favorite areas.

What really helpful items sit on your philatelic bookshelf?!

A Visit to a Post Office in Tanzania

Tanzania from p. 1

while the first-class letter rate was \$1.04. In both cases, the rate for sending mail from Tanzania to the U.S. was less than sending postcards and letters from the U.S. to Tanzania (\$1.15, the current rate of our Global Forever issues).

After the clerk had prepared the stamps for my mailings, she went back through her stock book and separated one each of the issues of those on hand for my collection. All of the stamps she sold me had water-activated gum and traditional perforations.

She also had a safe from which she took a small supply of souvenir sheets. I purchased the 3000/- Rembrandt van Rijn sheet of one and the Tazara Railway sheet of six (two each of 350/-, 600/-, and 800/-), both from 2006. She also sold me a Pan-African Postal Union sheet of one (600/-) from 2010. Finally, I

obtained the Wonders of Zanzibar sheet of six from 2011 (six designs, 600/- each) and the Chumbe Island Light House souvenir sheet with one large 600/- stamp, also from 2011.

After Pastor Mmanga and I had affixed the postage to my postcards and letters, I dropped them into the foreign-destinations slot in a collection box near the door as we left the post office. I noticed that the clerk was closing the window. It was about 3:20 p.m. local time.

Friends and relatives reported receiving their letters around October 28, making their travel time just a bit more than a week. Some pieces arrived in the U.S. before I did!

Note: If you have a personal story about a postal attraction have you have explored, either locally or while traveling, please share it at the next Club meeting or write it down to share in a future issue of this newsletter.

December 2014 Exchange

The Club offers the following items at its monthly exchange. Make payments in cash or in personal checks made out to the Club. Items in black are donations to the Lincoln Stamp Club. Proceeds from the sale of donations benefit the Club's general work.

Lot #	Description	Catalogue	Minimum	Final	Buyer
• 01	US Sc. 581 591, 597 606, 610 613 U	\$—	\$2.00	_____	_____
• 02	US Sc. 631 641, 645, 654 656 U	\$—	\$1.00	_____	_____
• 03	US Sc. 651, 684–685 U, 702–703 MH	\$—	\$2.00	_____	_____
• 04	US Sc. 692 701 U	\$—	\$1.00	_____	_____
• 05	US Sc. 716 734 U	\$—	\$0.50	_____	_____
• 06	US Sc. 773 783 U	\$1.75	\$0.25	_____	_____
• 07	US Sc. 899 908 MH, faults on 906–907	\$3.00	\$0.50	_____	_____
• 08	US Sc. 1278 M Bklt. Pr.	\$0.50	\$0.10	_____	_____
• 09	US Sc. 1278 1304 Mix M/U, 1278 line pr	\$—	\$4.00	_____	_____
• 10	US Sc. 4388 M PB (4) UR V11111	\$5.60	\$2.60	_____	_____
• 11	US Sc. 4504 M sht (20)	\$8.00	\$4.00	_____	_____
• 12	US Sc. 4506–4509 M sht (20)	\$12.00	\$5.80	_____	_____
• 13	US Sc. 4504 4717 Mailer w/ Post Due	\$1.00	\$0.50	_____	_____
• 14	US Sc. 4916 on cover	\$0.25	\$0.25	_____	_____
• 15	US Sc. J62, J71 J78 U	\$—	\$0.25	_____	_____
• 16	US Sc. J82 J93 U	\$1.00	\$0.10	_____	_____
• 17	Canada Sc. 2465 M	\$3.50	\$1.00	_____	_____
• 18	British Commonwealth 40 U	\$—	\$2.00	_____	_____
• 19	China 23 Mix M/U	\$—	\$2.00	_____	_____
• 20	France 20 Pictorials	\$—	\$2.00	_____	_____
• 21	Korea 20 Mix	\$—	\$2.00	_____	_____
• 22	Spain 25 Pictorials	\$—	\$2.00	_____	_____
• 23	World 20 Art Masterpieces	\$—	\$200	_____	_____
• 24	World 25 Flowers on Stamps	\$—	\$2.00	_____	_____
• 25	World 500 Different	\$—	\$5.00	_____	_____

Club News and Announcements 2015 Officer Elections

At the November business meeting, the Club opened nominations for elected positions for 2015. All of the positions for Club officers were opened for nominations for the elections to be held at the business meeting on December 4. If you have never held a position of leadership in the Club, if you have been mulling a return to leadership after some time away, or if you are experienced and would like to continue offering your talents, then this coming meeting will offer you the chance to step up to serve the Club and its members.

In addition to these elected positions, the Club always has need for members to coordinate and contribute to other parts of the Club's life:

- Exchange Coordinator
- Exchange Item Contributor
- Web Manager
- Newsletter Editor
- Newsletter Contributor
- Stamp Buddy Volunteer
- LINPEX Exhibitor
- LINPEX Volunteer.

Please consider how the hobby is calling you to give back to philately some of what you have received over the years.

LINPEX 2015 Updates

The Club has secured contracts with eight dealers for the bourse at the upcoming show, scheduled for February 28–March 1, 2015, at The Country Inn & Suites, Lincoln. This is the same venue as last year.

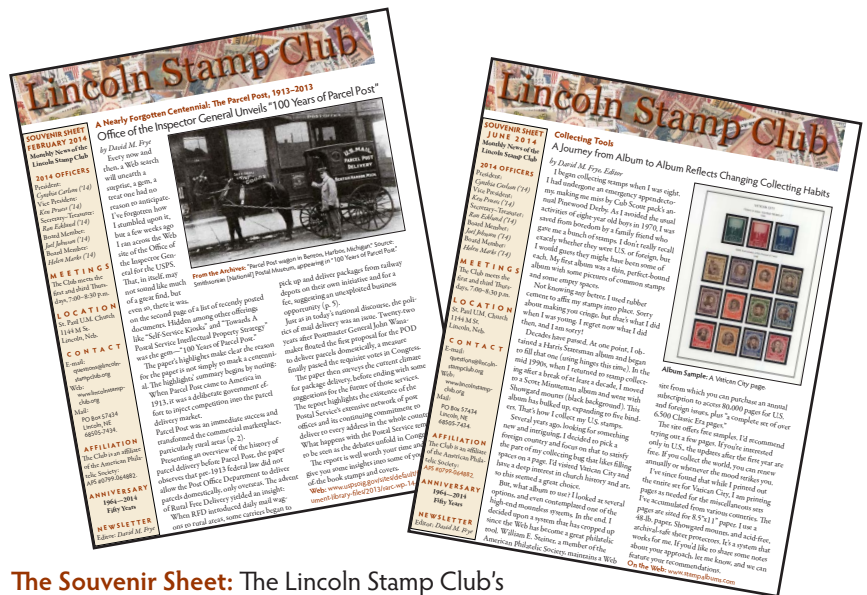
The show will feature a sixteen-frame exhibition open only to single-frame exhibits. A panel of two judges will review the exhibits. The simplified fee structure is \$20 per exhibit. Space is limited, so complete your entry soon.

Copies of the prospectus and entry form are available on the Club's Web site:

- **Prospectus:** www.lincolnstampclub.org/linpex/2015/linpex-prospectus.pdf
- **Entry Form:** www.lincolnstampclub.org/linpex/2015/linpex-entryform.pdf

The show offers a variety of ways for members to contribute their time and talents.

FROM THE ARCHIVES



The Souvenir Sheet: The Lincoln Stamp Club's monthly newsletter resides in an online archive available both to members and to the general public. To find issues, go to the Club's Web site and navigate to News. The individual issues appear there, grouped by year, with the later months appearing above the earlier months. The individual files are in the *.pdf format, which you may save and then read with Adobe Reader, Apple Preview, and other similar programs. The collection goes back to May 2010.

Newsletter Archive: www.lincolnstampclub.org/news/.

It's That Time of Year Once Again! Renewing Your Club Membership

Membership in the Lincoln Stamp Club follows the calendar year, so this is the season for renewing your annual membership.

A quick check of the mailing label on your copy of the newsletter reveals the two-digit code following your last name; this gives the year that your membership expires.

So, for instance, if you find a "14" there, then your membership runs through the end of December of this year. If you see a "15," then you have already paid through the end of next year.

To renew, send \$12—plus \$1 for each additional family member—to:

Lincoln Stamp Club
PO Box 57434
Lincoln, NE 68505-7434.

You may also bring your dues to any Club meeting. Dues are payable in cash or by check made out to the Club:

Lincoln Stamp Club.

Membership benefits include:

- Satisfaction of supporting a vibrant collectors' community
- A full-color, four-page monthly newsletter
- Access to buying and selling on the monthly exchange
- Opportunities to participate in the Stamp Buddy program
- Chances to experience philatelic service and leadership.

Membership: www.lincolnstampclub.org/membership/.

Meetings: Business, Elections, Exchange Lot Prepping

The Club meets at a central location from 7:00 p.m. to 8:30 p.m. on the first and third Thursdays each month:

St. Paul United Methodist Church
1144 M St., Lincoln, Neb.

Go south on 11th Street, then turn left into the church's parking garage between N and M Streets. Take the elevator to the *main* floor. Street parking is available too.

- **Business Meeting with ELECTIONS and Exchange:** Thursday, December 4.
- **Show and Tell and Program:**

"Preparing Exchange Items,"
David Frye, Thursday, December 18. **Note:** Please bring items you'd like to include in the Exchange. This program will help you prepare the listings for selling them.

- **Coming Up in January: New Officers Begin Terms Show and Tell and Program:** *"Members' Tips for Building a Philatelic Reference Library,"* Club Members, Thursday, January 15.
- **Meetings:** Feb. 5 and 19.

~Show and Tell~

We encourage members of the Club to bring items from their collections to the program meeting—the second meeting of the month—to show to other Club members.

You can bring an unusual or distinctive item, an item with a story,

an item that needs further identification, or any other item that captures your eye and interest. This is a great way to share with fellow collectors some of the high points of your collection. You never know what might show up!

WANTED

Items for Monthly Exchanges

If you would like to include items in the monthly exchanges, send your descriptions and prices to questions@lincolnstampclub.org by Dec. 18 for the Jan. 2015 Exchange.

Send info about more significant items, which might require members to research ahead of time, by Dec. 18 for the Feb. 2015 Exchange. Forms for your items are available online:

- www.lincolnstampclub.org/downloads/SmallExchangeSheets.pdf
- www.lincolnstampclub.org/downloads/ExchangeSheet.pdf

USPS Issues: Jan.—Feb. 2015

January 8—*War of 1812: Battle of New Orleans:* 1 forever (49¢) com.; pane (20); New Orleans, La.

January 26—*Forever Hearts:* 2 forever (49¢) special; pane (20); TBA.

February 2—*Year of the Ram:* 1 forever (49¢) com.; pane (12); TBA.

February ??—*Black Heritage Series: Topic?;* 1 forever (49¢) com.; pane (20); TBA.

- www.uspsstamps.com/stamps/preview
- www.facebook.com/USPSStamps

Please Send Your 2015 Dues
of \$12 to the Club by 12/31.
See Details on p. 3.

LINCOLN STAMP CLUB
PO BOX 57434
LINCOLN NE 68505-7434
1964 • Fifty Years • 2014

