

# Lincoln Stamp Club

**SOUVENIR SHEET**  
DECEMBER 2015

## OFFICERS

President:

*Cynthia Carlson ('15)*

Vice President:

*Ken Pruess ('15)*

Secretary:

*Joyce Rivera ('15)*

Treasurer:

*Ron Ecklund ('15)*

Board Member:

*Joel Johnson ('15)*

Board Member:

*Carl Marks ('15)*

## MEETINGS

The Club meets the first and third Thursdays, 7:00–8:30 p.m.

## LOCATION

St. Paul U.M. Church  
1144 M St.  
Lincoln, Neb.

## CONTACT

E-mail:

[questions@lincolnstampclub.org](mailto:questions@lincolnstampclub.org)

Web:

[www.lincolnstampclub.org](http://www.lincolnstampclub.org)

Facebook:

[www.facebook.com/LincolnStampClub](http://www.facebook.com/LincolnStampClub)

Mail:

PO Box 57434  
Lincoln, NE  
68505-7434.

## AFFILIATION

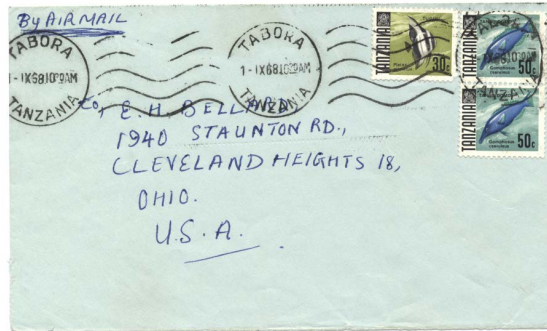
The Club is an affiliate of the American Philatelic Society:  
APS #0799-064882.

## NEWSLETTER AND WEB SITE

Editor: *David M. Frye*

## In Pursuit of Summaries of Mail Classes, Postal Charges, and Destinations

### Postmark Dates and Frankings Aid in Defining Postal Rates



Tabora to Cleveland Heights: TZS 1/30, air mail.

by *David Frye, Editor*

Since August, when I began collecting Tanzanian postal history in earnest, I've decided to focus my first efforts on two series of definitives issued by Tanzania. The first is the fish definitive series (1967–1973) and the second is the butterfly definitive series (1973–1978). The fish series has some varieties due to changes in paper types. Both series have official overprint versions. These details make the series more challenging to collect on cover.

I've discovered, by corresponding with members of the East Africa Study Circle, that no published summary of postal rates for Tanzania for this period exists, meaning that no one has yet gone through the various governmental publications released during the period and compiled announcements of classes, rates, and destinations into a comprehensive summary like Wawrukiewicz and Beecher's volumes on United States domestic and international rates.

Lacking that resource and, so far, not having access to Tanzanian governmental bulletins, I've decided to approach the mix of classes, rates, and destinations using a bottom-up, data-gathering approach. I've created a census of the covers I have acquired, noting for each cover the origin, destination, franking, and dates (obtained from all legible postmarks).

When I look at this information in tabular or graphical form, I can see clearly the distinctions between rate periods for mail of a particular class and general destination. So, for instance, the two covers illustrating this article show the changes in first-class air mail rates for the first weight-increment from Tanzania to Europe and North America.

The blue cover, franked TZS 1/30, includes one 30¢ (*Stanley Gibbons* 146, *Scott* 23) and two 50¢ (*SG* 148, *SC* 25) issues from the fish definitive series and is postmarked 1 September 1968. The second cover, below, franked TZS 1/50, includes one 50¢ Kenya-Uganda-Tanzania issue (*SG* 245, *SC* 182) and one TZS 1/- fish definitive (*SG* 151, *SC* 28), with a postmark date of 18 November 1969.

In my census, the air mail covers dated before the earlier cover are all franked TZS 1/30, while the covers dated after the later cover are



Dar-es-Salaam to Röschenz: TZS 1/50, air mail.

all franked at least TZS 1/50. This tells me that the rate for the first weight-increment for first-class air mail to Europe and North America rose by 20¢ at some point between the postmark dates for these two covers. So far, my census doesn't have enough covers in it to pinpoint the date of the rate change, but the data have helped me to create a model to adjust with each new cover I acquire.

The search and refining continue!

## December 2015 Exchange

The Club offers the following items at its monthly exchange. Make payments in cash or in personal checks made out to the Club. Proceeds from the sale of donations benefit the Club's general work. The seller's initials appear in the last column. LSC lots are donations. Number your lots before the meeting.

Lot #	Description	Catalogue	Minimum	Final	Buyer	Seller
▪ 01	Canada Sc. 7444//779 12 ships MNH	—	\$1.00	_____	_____	LSC
▪ 02	Fiji Sc. 132 MNH	\$1.00	\$0.25	_____	_____	KR
▪ 03	Fiji Sc. B3, B4	\$0.55	\$0.20	_____	_____	KR
▪ 04	France Sc. 127 LH	\$42.50 NH	\$10.00	_____	_____	KR
▪ 05	France Sc. 159 U	\$0.25	\$0.10	_____	_____	KR
▪ 06	France Sc. 219 LH	\$1.90 NH	\$0.50	_____	_____	KR
▪ 07	France Sc. 306 U	\$2.00	\$0.20	_____	_____	KR
▪ 08	France Sc. 692A LH	\$2.00 NH	\$0.25	_____	_____	KR
▪ 09	France Sc. 1325a MNH	\$4.50	\$1.50	_____	_____	KR
▪ 10	France Sc. B73 LH	\$10.00 H	\$3.00	_____	_____	KR
▪ 11	France Sc. B76 LH	\$21.50 H	\$4.00	_____	_____	KR
▪ 12	France Sc. B83 LH	\$37.50 NH	\$10.00	_____	_____	KR
▪ 13	France Sc. B575–B579 MNH	\$5.05	\$1.50	_____	_____	KR
▪ 14	France Sc. B197–B200 MNH	\$2.00	\$0.75	_____	_____	KR
▪ 15	France Sc. 1041, 1044 MNH	\$3.10	\$1.00	_____	_____	KR
▪ 16	Russia Sc. 3924–3928 MNH	\$2.05	\$0.75	_____	_____	KR
▪ 17	Russia Sc. 2120–2134 U	\$6.75	\$2.25	_____	_____	KR
▪ 18	Thailand Sc. 1221 M	\$2.75	\$0.90	_____	_____	DMF
▪ 19	Thailand Sc. 1284–1285 M se-tenant pair	\$4.00	\$1.30	_____	_____	DMF
▪ 20	Thailand Sc. 1305–1308 M Set of 4	\$5.00	\$1.65	_____	_____	DMF
▪ 21	Thailand Sc. 1309, 1311–1312 M	\$2.60	\$0.80	_____	_____	DMF
▪ 22	United Nations Sc. 1–14 MNH	\$10.70	\$3.50	_____	_____	KR
▪ 23	United Nations Sc. 179 U (2 ident. lots)	\$0.40	\$0.20	_____	_____	KR
▪ 24	U.S. plate blocks MNH Face \$35+	—	\$25.00	_____	_____	LSC
▪ 25	U.S. common used 1000s	—	\$1.00	_____	_____	LSC
▪ 26	U.S. 25 FD covers	—	\$1.00	_____	_____	LSC
▪ 27	U.S. charity seals 100s	—	\$1.00	_____	_____	LSC
▪ 28	U.S. & foreign album, about 400	—	\$2.00	_____	_____	LSC
▪ 29	U.S. & foreign album, 650+	—	\$7.50	_____	_____	LSC
▪ 30	U.S. Sc. 642 M	\$3.10	\$1.00	_____	_____	DMF
▪ 31	U.S. Sc. 721 M	\$3.50	\$1.00	_____	_____	DMF
▪ 32	U.S. Sc. 909–921 M	\$3.75	\$1.25	_____	_____	DMF
▪ 33	U.S. Sc. C18 MH	\$170.00	\$18.00	_____	_____	JC
▪ 34	U.S. Sc. E14 M LH	\$2.00	\$0.60	_____	_____	DMF
▪ 35	U.S. Sc. O96 MNH	\$15.00	\$6.50	_____	_____	JC
▪ 36	U.S. Sc. RW9 MNH & 1 U	\$240.00	\$45.00	_____	_____	JC
▪ 37	U.S. Sc. RW10 MNH	\$110.00	\$19.95	_____	_____	JC
▪ 38	U.S. Sc. RW12 MNH & 1 U	\$85.00	\$15.00	_____	_____	JC
▪ 39	U.S. Sc. RW41 MNH	\$32.00	\$12.50	_____	_____	JC
▪ 40	U.S. Sc. RW47 MNH	\$35.00	\$10.00	_____	_____	JC
▪ 41	Am. 1st Day Cover Society Journals: 1981	—	\$0.50	_____	_____	CC
▪ 42	Am. 1st Day Cover Society Journals: 1982	—	\$0.50	_____	_____	CC
▪ 43	Am. 1st Day Cover Society Journals: 1983	—	\$0.50	_____	_____	CC
▪ 44	Am. 1st Day Cover Soc. Journals: 1984–86	—	\$0.50	_____	_____	CC
▪ 45	Am. 1st Day Cover Society Journals: 1987	—	\$0.50	_____	_____	CC
▪ 46	Am. 1st Day Cover Society Journals: 1988	—	\$0.50	_____	_____	CC
▪ 47	Am. 1st Day Cover Society Journals: 1989	—	\$0.50	_____	_____	CC

### Club Will Hold Its Elections

Elections at the December 3 meeting will fill the four officer and two at-large director positions. Newly elected leaders will begin their terms in January.

Nominees include:

**Ken Pruess**, President; **Joyce Rivera**, Secretary; and **Dave Wallman**, Treasurer; at-large directors: **Joel Johnson** and **Carl Marks**. The Vice President's position is open.

### Club Welcomes Exchange Manager

The Club extends its thanks to **John Schultz** for accepting the position of Exchange Manager. He will begin his work with the February exchange, receiving descriptions of members' lots through mid January.

In addition, he will organize and prepare donation lots. This is a vital part of the Club's operations. Over the last two years, the Club has realized over \$1,400 from the sale of donated items.

Again, thanks, John, for taking on this important responsibility. Thanks, too, to **Jim Camp** for his service as Exchange Manager.

Club Approves Theme and Design for Show Cover

## LINPEX '16 to Mark Sesquicentennial of Black Elk's Birth

by David M. Frye, Editor

The Lincoln Stamp Club decided to observe the one-hundred-fiftieth anniversary of the birth of Nicholas Black Elk, holy man of the Oglala Lakota, with the design of the show cover for LINPEX '16.

In a departure from

past show covers, this year's cover will feature a club-designed stamp produced by Zazzle.com.

The show cover's insert will contain the following description of Black Elk and his significance in American history:

Heháka Sápa, known also as Black Elk, was present, as a child, at Little Big Horn in 1876 when the combined forces of several tribes, including Black Elk's Lakota, defeated U.S. Army forces under the command of George Armstrong Custer. In 1881, Black Elk proclaimed his calling as a holy man, or wícháša wakhán, when he performed the Horse Dance. From 1887 to 1889 he traveled with Buffalo Bill Cody's Wild West

*Exhibits Sought for Stamp Show*

## Members' Philatelic Exhibition in the Works for LINPEX

At this year's stamp show, members of the Club will have the opportunity to display their exhibits in a sixteen-frame, non-competitive exhibition. Eleven of the sixteen frames are still available. No single exhibit may exceed four frames. The entry fee, designed to cover the cost of frame rental and transport, is \$5 per frame.

If you would desire an unofficial, yet insightful critique of your work from the perspective of seasoned judges,

LINPEX STATION  
LINCOLN, NE

68521  
FEB 27, 2016



**Black Elk's Birth Sesquicentennial:** 2016 marks the one-hundred-fiftieth anniversary of Black Elk's birth. John G. Neihardt, Nebraska poet, interviewed him as the grounds for his famous biography.

Show. The cachet's photograph, made in London in 1887, shows him with Elk, a fellow performer, to his right. After returning to the Pine Ridge Reservation in 1889, he advocated for armed resistance against the U.S. military and survived the Wounded Knee Massacre in 1890. He became a Catholic in 1904 and served as a catechist. His interviews with John G. Neihardt in 1931 reached the public in 1932 with the publication of *Black Elk Speaks*. Black Elk died August 17, 1950, in Manderson, South Dakota, and is interred there in the Saint Agnes Catholic Cemetery.

LINPEX '16 will be held Saturday and Sunday, Feb. 27–28, 2016, at Country Inn & Suites, Lincoln.

**Web:** [www.lincolnstampclub.org/linpex/](http://www.lincolnstampclub.org/linpex/).

please visit with Ken Pruess, who is coordinating the exhibits for the show. If you are looking for tips and guidance, a number of members of the Club have exhibited both locally and nationally and would gladly offer suggestions along the way as you prepare your exhibit. The American Association of Philatelic Exhibitors provides a number of helpful online resources.

**Web:** [www.aape.org/exhibiting.asp](http://www.aape.org/exhibiting.asp).

## Topics: Business, Elections, & "Dead or Alive on Stamps"

The Club meets at a central Lincoln location from 7:00 p.m. to 8:30 p.m. on the first and third Thursdays each month:

St. Paul United Methodist Church  
1144 M St., Lincoln, Neb.

Go south on 11th Street, then turn left into the church's garage between N and M Streets. Take the elevator to the *main* floor, Rm. 155. Street parking is available too.

## ~Welcome~

The Lincoln Stamp Club welcomes guests to every club meeting and encourages collectors of all interests and experience to consider joining. Dues are only \$12/year, and can be mailed to the Club at its address on the front page or brought to a meeting. A membership form is available on the Web:

- **Membership:** [www.lincolnstampclub.org/membership/](http://www.lincolnstampclub.org/membership/).

- **Meeting, Elections, & Exchange:** Thurs., Dec. 3.
- **Show and Tell & Program:** Thurs., Dec. 17: "*The Dead (How long?) and Living on US Stamps*" by **Bob Ferguson**.
- **Meeting & Exchange:** Thurs., Jan. 7, 2016.
- **Show and Tell & Program:** Thurs., Jan. 21, 2016: "*Trans. - Miss. Issue*" by **Ken Pruess**.

## Find us on

The Lincoln Stamp Club has taken its first steps into the world of social media by launching its new Facebook page. If you are on Facebook, please "like" the Club and share its updates with your circle of friends. Now is a good time to sign up and get your own free Facebook account.

- **Facebook:** [www.facebook.com/LincolnStampClub](http://www.facebook.com/LincolnStampClub).

## SPECIAL REQUEST

### Items for January Exchange

If you would like to include items in a special exchange, give your descriptions and prices to **David Frye**, [questions@lincolnstampclub.org](mailto:questions@lincolnstampclub.org), by Dec. 15 for the Jan. 7, 2016, Exchange.

This special exchange will feature items from Club members. Get your attractive lots listed! Forms for your items are available online:

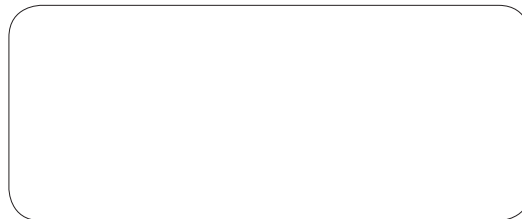
- [www.lincolnstampclub.org/downloads/SmallExchangeSheets.pdf](http://www.lincolnstampclub.org/downloads/SmallExchangeSheets.pdf)
- [www.lincolnstampclub.org/downloads/ExchangeForm4up.pdf](http://www.lincolnstampclub.org/downloads/ExchangeForm4up.pdf).

## Elections

The Lincoln Stamp Club will hold its elections at the December 3, 2015, meeting. Your presence, vote, and support help to make our Club thrive.

## Membership

By December 31, return your membership sheet with your 2016 dues to stay active in the Club for the coming year.



LINCOLN STAMP CLUB  
PO BOX 57434  
LINCOLN NE 68505-7434

