



**SOUVENIR SHEET
JUNE 2012**

Monthly News of the
Lincoln Stamp Club

2012 OFFICERS

President:

Ricky George

Vice President:

George Wagner

Secretary:

David M. Frye

Treasurer:

Ron Ecklund

Board Member:

Joel Johnson

Board Member:

Carl G. Marks

MEETINGS

The Club meets the
first and third Thurs-
days, 7:00–9:00 p.m.

LOCATION

St. Paul United
Methodist Church
1144 M St.
Lincoln, Neb.

CONTACT

E-mail:

questions@lincoln-
stampclub.org

Web:

www.lincolnstamp-
club.org

Mail:

PO Box 57434
Lincoln, NE
68505-7434

AFFILIATION

The Club is an affili-
ate of the American
Philatelic Society:
APS #0799-064882.

Treasure of U.S. Postal Info Now Unlocked

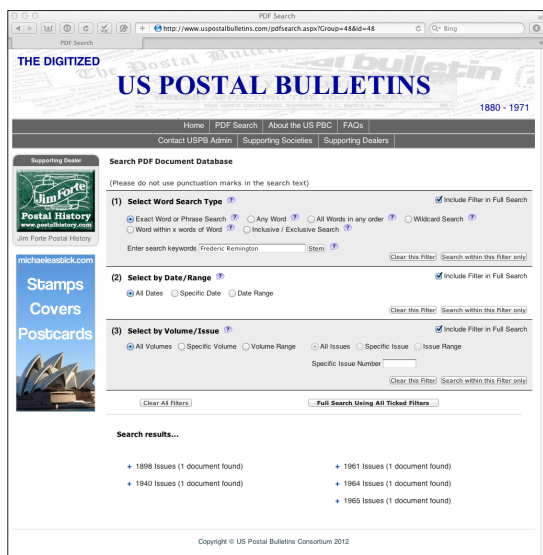
by *David M. Frye*

A great primary source of information about the operations of the U.S. Post Office Department recently appeared on the Web. Called “The Digitized U.S. Postal Bulletins,” the site covers the issues of these bulletins from 1880 to 1971, the period in which copyright issues do not impinge upon free use.

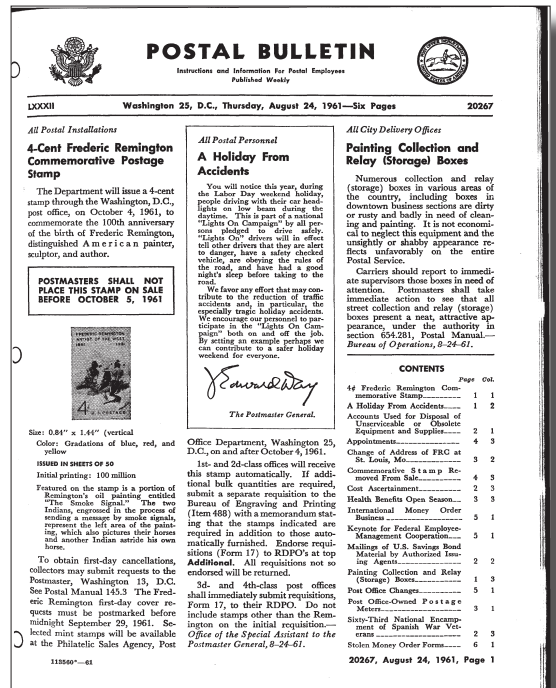
The labors of the U.S. Postal Bulletin Consortium, comprising several individuals and philatelic societies, resulted in scanning the contents of these printed materials and making the information highly searchable.

To show how the site works, I searched for the keywords of personal interest—“Frederic Remington”—that returned five documents from 1898, 1940, 1961, 1964, and 1965. The search page appears in the illustration below.

Clicking on the search result links took me to *.pdf versions of the postal bulletins in



PDF Search: Ninety-one years’ worth of bulletins, including “well over 60,000 pages of content,” serves as “... an incredible resource for a person who wishes to understand POD operations and policies, locations for its services, types and rates for services, processes by which it functions, etc.”



Finding: The Aug. 24, 1961, issue of the Postal Bulletin, announcing the Frederic Remington Stamp of October 1961 and highlighting first day of sale instructions.

which the search results appeared. The search page presents numerous features and options, allowing highly customizable searches by words, dates, and volume and issue numbers.

The site required no registration and charges no fees for its use. The site states, “The major source of contributions to this endeavor was Tony Wawrukiewicz, but there has been significant support from a number of societies, especially the United States Stamp Society, but also the Universal Ship Cancellation Society, the Mobile Post Office Society, and the Postal History Society. A few individuals have also been generous supporters.”

On the Web: : www.uspostalbulletins.com.

Covering Local History

At the June 21 meeting, Dave Hamilton, a guest, will present a program entitled, “Nebraska Territorial Covers.”

June Exchange

Lot #	Description	Catalogue	Open	Final	Name
• 01	Nebraska 1981 Habitat Stamp—Used	—	\$0.30	_____	_____
• 02	U.S. #252—M, LH w/ Tab	\$110.00	\$38.00	_____	_____
• 03	U.S. #1686–1689—4 Bicentennial Souv. Sheets MNH	\$28.75	\$10.00	_____	_____
• 04	U.S. #2837—1994 World Cup Souv. Sheet MNH	\$5.75	\$2.50	_____	_____
• 05	U.S. #2840—Norman Rockwell Souv. Sheet MNH	\$6.75	\$3.25	_____	_____
• 06	U.S. #2841—Moon Landing Souv. Sheet MNH	\$14.50	\$6.75	_____	_____
• 07	U.S. #3694—Hawaiian Missionary Souv. Sheet	\$6.25	\$3.25	_____	_____
• 08	Czechoslovakia—M w/ “We are Free” overprint	—	\$5.00	_____	_____
• 09	Montenegro #45–56—47 & 51 w/ some damage, MH	\$3.25	\$1.25	_____	_____
• 10	Persia (Iran) #448–454, 456—449 w/tear, Mint	\$21.00	\$6.00	_____	_____
• 11	Persia (Iran) #455, 457, 458, 459—MNH	\$75.00	\$22.50	_____	_____
• 12	Persia (Iran) #460—Perfs clipped on one edge, MNH	\$22.50	\$2.50	_____	_____
• 13	Persia (Iran)—Short perfs on left edge, MNH	\$55.00	\$8.75	_____	_____
• 14	Persia (Iran) #481–486—Used, w/ some HR	\$1.75	\$0.50	_____	_____
• 15	Russia #37—MNH	\$25.00	\$5.75	_____	_____
• 16	Russia #38—MNH	\$30.00	\$6.75	_____	_____
• 17	Russia #43—MNH	\$2.00	\$0.50	_____	_____
• 18	Russia #44—MNH	\$2.25	\$0.60	_____	_____
• 19	Russia #62—MNH, OG	\$3.00	\$1.00	_____	_____
• 20	Russia #216—MNH	\$0.70	\$0.25	_____	_____

The following donated lots benefit the Club's programs and activities. Thanks for your generous offers!

• 21	Showgard Orthomatic Cutter for Stamp Mounts (#604)	—	No Min.	_____	_____
• 22	Lot of three small stock books	—	No Min.	_____	_____
• 23	U.S.—#C10, block of four (4), crease, HR, material on gum	—	No Min.	_____	_____
• 24	U.S.—#C91–C92, plate block of four	\$3.00	No Min.	_____	_____
• 25	U.S.—#UX38, lot of eleven (11) postal cards, printed backs	—	No Min.	_____	_____
• 26	U.S.—#UX46, Lot of ten (10) postal cards	\$5.00	No Min.	_____	_____
• 27	U.S.—#UX92, lot of five (5) postal cards	\$1.50	No Min.	_____	_____
• 28	U.S.—#UX92, lot of eight (8) postal cards, printed backs	—	No Min.	_____	_____
• 29	Gold & Co. Department Store post card, unused	—	No Min.	_____	_____
• 30	The Cathedral, Lincoln, Neb., lot of five (5) post cards, unused	—	No Min.	_____	_____
• 31	Hotel Cornhusker post card, unused	—	No Min.	_____	_____

Nine-Month Implementation; \$1.2 Billion in Cost Reductions

Postal Service Moves Ahead with Modified Network Consolidation Plan

WASHINGTON, D.C., May 17, 2012—The U.S. Postal Service today announced modified and phased plans to consolidate its network of 461 mail processing locations. The first phase of activities will result in up to 140 consolidations by February 2013. Lincoln's processing and distribution facility is marked with the "potential to consolidate."

Unless the circumstances of the Postal Service change in the interim, a second and final phase of 89 consolidations is currently scheduled to begin in February 2014.

"We revised our network consolidation timeline to provide a longer planning schedule for our customers, employees and other stakeholders, and to enable a more methodical and measured implementation," said Patrick R. Donahoe, Postmaster General and Chief Executive Officer of the Postal Service.

"We simply do not have the mail volumes to justify the size and capacity of our current mail processing network. To return to long-term profitability and financial stability while keeping mail affordable, we must match our network to the anticipated workload," said Donahoe. "Our current plan meets our cost reduction goals, ensures seamless and excellent service performance

throughout the implementation period, and provides adequate time for our customers to adapt to our network changes."

The Postal Service will begin consolidating operations this summer—which mostly involve transferring mail-processing operations from smaller to larger facilities. Due to the volume of high-priority mail predicted for the election and holiday mailing seasons, no consolidating activities will be conducted from September through December 2012. Approximately 5,000 employees will begin receiving notifications next week related to consolidating and other efficiency-enhancing activities to be conducted this summer.

"We will be conducting consolidation activities this summer at only 48 locations," said Megan Brennan, chief operating officer of the Postal Service. "As a result, nearly all consolidating activities in 2012 will occur in August and then will resume again the early part of next year."

These consolidating activities will reduce the size of the Postal Service workforce by approximately 13,000 employees and, when fully implemented, will generate cost reductions of approximately \$1.2 billion annually.

"The Postal Service will

be communicating with our customers and employees about these changes in great detail," said Megan Brennan. "We will work closely with our customers to ensure there are no surprises as we move forward."

The Postal Service also announced it is working with its unions for an employee retirement incentive, although no final decision has been made. "The Postal Service has reduced the size of its workforce by 244,000 career employees since 2000 without resorting to layoffs," said Brennan. "We are a responsible employer and we will work with our employees to ensure a smooth transition to a much leaner organization."

The Postal Service also announced that it would soon issue a new regulation to modify its existing Service Standard for overnight delivery. The Postal Service said a Final Rule would soon be published in the Federal Register that would initially shrink the geographic reach of overnight service to local areas and enable consolidation activity in 2013. The new rule would further tighten the overnight delivery standard in 2014 and enable further consolidation of the Postal Service mail processing network absent any change to the circumstances of the Postal Service.

"We are essentially preserving overnight delivery for First-Class Mail through the end of 2013, although we are collapsing the distance that we can provide overnight service to the distribution area served by a particular mail processing facility," said Megan Brennan. Approximately 80 percent of First-Class Mail will still be delivered overnight.

The Postal Service stated its expectation to pursue additional consolidation activities for an additional 89 mail processing locations beginning in 2014 unless its circumstances change. These consolidations would be based on long-term service standards that would significantly revise mail-entry times for customers seeking overnight delivery.

"Given that the Postal Service is currently projecting a \$14 billion net loss in FY2012, and continuing annual losses of this magnitude, we simply cannot justify maintaining our current mail processing footprint," said Donahoe.

When fully implemented in late 2014, the Postal Service expects its network consolidations to generate approximately \$2.1 billion in annual cost reductions, and lead to total workforce reduction up to 28,000 employees.

USPS RELEASES: JUNE–JULY 2012

June 1: *Bobcat*; one 1¢ defin., coil of 3k, San Marcos, TX.

June 1: *Four Flags*; four forever (45¢) defin., pane of 10, McLean, VA.

June 2: *Aloha Shirts*; five 32¢ defin., pane of 10, McLean, VA.

June 7: *Bicycling*; four forever (45¢) comm., pane of 20, Minneapolis, MN.

June 9: *Celebrate Scouting*; one forever (45¢) comm., pane of 20, Washington, DC.

June 12: *Miles Davis and Edith Piaf*; two forever (45¢) comm., pane of 20,

joint issue with France, New York, NY.

June 22: *Sailboats*; single forever (32¢) postal card, Lancaster, PA.

June 23: *Scenic American Landscapes*; ten forever (32¢) postal cards, booklet of 20, Lancaster, PA.

June 29: *Wood Duck*; two \$15 federal migratory waterfowl stamps., Hampton, VA.

July 20: *Major League Baseball All-Stars* (DiMaggio, Doby, Stargell, Williams); four forever (45¢) comm., pane/20, Cooperstown, NY.

WANTED

Items for Monthly Exchanges

If you would like to include items in the monthly exchanges, send your descriptions and prices to questions@lincolnstampclub.org by the twenty-fifth of the month for inclusion in the following month's newsletter (**June 25 for July 5 exchange**).

More significant items, which might require members to research ahead of time, should be sent by the same deadline for the second exchange following the submission (**June 25 for August 2 exchange**).

Meetings: Nebraska Territorial Covers & Exhibit Building

The Club meets at a central location:
St. Paul United Methodist Church
1144 M St., Lincoln, Neb.

Go south on 11th Street, then turn left into the church's parking garage between N and M Streets. Take the elevator to the *main* floor. Street parking is available too.

- **Business Meeting & Exchange**
Thurs., June 7, 2012, 7–9 p.m.

See pp. 2 and 5 for Exchange Items.

- **Program:** *Nebraska Territorial Covers*, by Dave Hamilton
Thurs., June 21, 2012, 7–9 p.m.
- **Business Meeting & Exchange**
Thurs., July 5, 2012, 7–9 p.m.
- **Program:** *How to Build a Philatelic Exhibit*, by Ken Pruess
Thurs., July 19, 2012, 7–9 p.m.

- **Looking Ahead:** August 2, 16; September 6, 20; October 4, 18; November 1, 15; December 6, 20.

If you have worn out the ears of your relatives telling them about your collecting focus and passion, consider offering a program at a Club meeting. We are an appreciate audience with listening ears! Contact David Frye at 402.797.7207.



LINCOLN NE 68505-7434
PO BOX 57434
LINCOLN STAMP CLUB